

1972



2022

2022 Annual Report

to the community

Fiscal Year 2022: July 1, 2021 - June 30, 2022



*“Together, we can create a world
where all youth are valued
for who they are and
realize their full potential.”*

*– Hanna Getachew-Kreusser, M.A.
Executive Director, Face to Face*

Fifty years ago, the community recognized the challenges young people were facing, and responded.

You raised the funds to create a lifeline for young people. You gave your time and talent to ensure we walked alongside youth as they healed from trauma, built stability, and participated meaningfully in their community.

What began as a volunteer-run phone crisis counseling center has grown to a multi-faceted response to the growing and changing needs of youth. In 50 years, tens of thousands of young people have accessed medical care, therapy, housing, support, drop-in basic needs, justice alternative programming, education support, employment services, and much more.

We aim to provide youth with barrier-free access to resources and opportunities. To end the pervasive inequities they face, we are focusing on innovative approaches to address the disparities that have been in existence for years.

Each young person is powerful and their voice matters. Instead of seeing

them through the lenses of their needs, we focus on their strengths.

Recently, we conducted an analysis of our social return on investment. We learned that for every dollar spent to deliver services, the return is at least \$3.38 in social value.

I know you care about youth, but sometimes it can be hard to know what to do. We have many ways to help you take action—whether volunteering, advocating, or donating.

We invite you to talk to us about how to engage in supporting youth. Together, we can create a world where all youth are valued for who they are and realize their full potential.

*Hanna Getachew-Kreusser, M.A.
Executive Director, Face to Face*

Face to Face has cared for youth for 50 years.

In 1971, volunteers created Face to Face to provide phone crisis counseling for teens. In April 1972, they incorporated it as Face to Face Crisis Center and created a drop-in medical clinic staffed by St. John's Hospital physicians and residents.

In 1974, Nan Skelton was hired as the first Executive Director. Nan stayed in that role for nine years, a period of tremendous growth in response to community need. During her time, Face to Face started providing health education and mental health counseling in the schools, created the Adolescent Abuse Project, and started providing pregnancy care, a youth employment program and an adolescent father's program.

That was all in the first 10 years!

In the last 25 years, this organization has continued adapting to the needs

of youth and the community. It has expanded services and hours at SafeZone, a day shelter providing supportive services to youth unstably housed or experiencing homelessness. Face to Face has expanded services at the clinic, created housing for youth and young families who are homeless, operated a hotel shelter program during the pandemic, and much more.

We are so grateful to each and every one of our partners over the past 50 years, as they've provided tremendous contributions and a continued commitment to youth.

We look forward to continuing to work alongside the community over these next 50 years as we expand the ways we support youth as they build on their strengths and achieve their aspirations.



*“In the last 25 years,
this organization has continued
adapting to the needs of youth
and the community.”*

*- Deborah Loon Stumbas
Board of Directors Vice Chair,
Face to Face*

To better reflect our learning and growth, we updated our mission and vision.

Mission

Advancing economic and health equity for youth while providing support, opportunities, and access to resources as they build on their strengths and achieve their aspirations.

Vision

All youth are valued for who they are and realize their potential.



The pandemic years have been especially difficult for youth due to the increased isolation and stress, the murder of George Floyd, and growing gun violence. The safety nets they counted on were ripped apart. Youth had fewer options and less support. In response, we quickly addressed their needs:

- We provided services in COVID safe environments and gave them the supplies needed to stay healthy.
- We provided access to medical care and therapy through telehealth.
- We partnered with Ramsey County and the Department of Human Services to provide short-term housing in hotel rooms.
- We implemented an education and employment training program.
- We partnered with the Ramsey County Attorney's Office to launch a program for youth involved in the justice system

^
Pregnant youth receive comprehensive care, including medical care, case management, and resources.

What We Do

Face to Face supports young people through six core programs that include comprehensive, wraparound care with a relational and principle-based approach.

No other organization in Ramsey County provides the breadth of services for young people that we do, making us uniquely able to respond to the multiple challenges youth are navigating.



Medical Clinic and Health Education



Mental Health



Housing



Education and Employment



Youth Justice



Community Programs



Who We Support

Face to Face supports young people who are experiencing the most disparities in health, housing, and other life outcomes.

We work to ensure that all youth feel welcomed and that our staff are not only competent to serve youth but provide services that affirm youth's identities.



Ages 11-24



85% with an income at or below the Federal Poverty Guideline



85% youth of color



12% identify as LGBTQ+, 63% straight, and 26% chose not to identify



59% identify as female, 33% male, and 2% transgender, genderqueer, or non-binary

We engage young people from their strengths and provide supportive relationships that have a positive impact on their development. Youth voice is incorporated in all that we do.

“I am able to succeed in my goals and get into housing thanks to this program.”

– Face to Face Youth

2022 By the Numbers

In fiscal year 2022, we served 2,034 youth.

162 youth had **1,646** mental health visits, including **26** uninsured youth

1,039 youth had **9,496** visits to SafeZone day shelter

84 youth and community members were tested for HIV and counseled on prevention

291 youth received individual and group health education

60 youth participated in justice alternative programming

180 youth assisted with shelter, rental assistance, and transitional housing

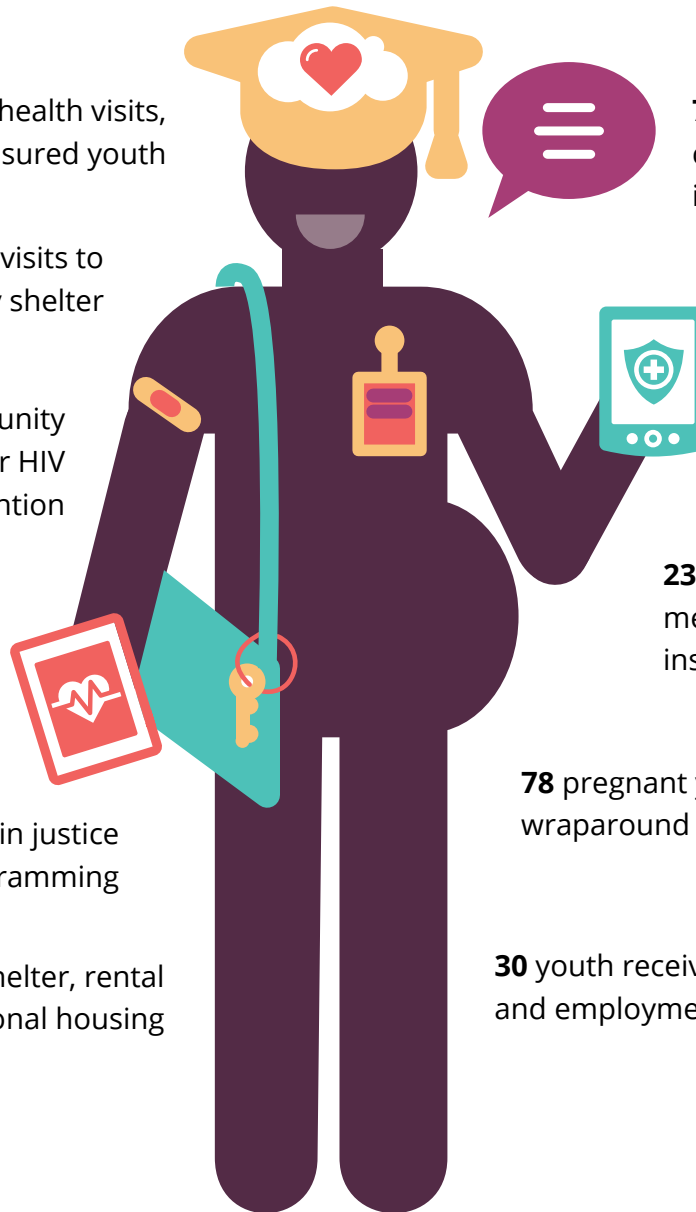
796 youth had **7,187** case management interactions

879 youth had **2,916** medical visits, including **178** uninsured youth

238 youth and community members received health insurance navigation

78 pregnant youth received wraparound prenatal care

30 youth received education and employment services



A Mother's Story

Face to Face is a dear, community organization that supported my family in a time of need.

In 2002, we lived about four miles from Face to Face. My daughter was 16 years old, and she was on the gymnastics team, had a part time job, bought her first car, was a good student, and hoped to be a hair stylist someday.

She had always been outgoing and had friends that I liked. Then one day, it was if a light switch turned off in her. Years later, we found out she had been assaulted.

“Face to Face helped give me my child back.”

– Michele Gellerman

She had some support at school and the community, but it didn't seem to be the right fit. While she had a good, loving support system, it wasn't enough. She started cutting herself to alleviate the pain. When that didn't work, she began to use pot to mask the pain.

After graduating, she turned to crystal meth. It was then that I lost my daughter for several months. She lost her job. She changed all her friends. She lived on the streets for weeks. She ripped off a drug dealer who put a

price on her head.

I tried to help her in as many ways as possible. She came back home, and I gave her an ultimatum—go to treatment or move in with my brother out of state. Thankfully, she chose a treatment center and found her higher power and quit using.

When she came home, she went to Face to Face for therapy. Her therapist there worked with her and provided tools that she uses to this day. Her

body and soul healed.

Over the years, it has been sad to hear that some friends from the time of her addiction have died. That could have been her. Instead, she became a hairstylist and now has her own hair and yoga studio. She is married and is a loving, devoted parent to three kids.

I will be forever grateful to Face to Face as they helped give me my child back.



Celebrating 50 Years

An evening of powerful stories and gratitude



Lieutenant Governor Peggy Flannagan & Hanna Getachew-Kreusser, proclaiming Face to Face Day

Thanks to our supporters, we came together in person and virtually to celebrate our 50th anniversary. Together we passed our goal and raised more than \$55,000 to support youth. Here are some highlights of the event:

- Matt Serwe, KSTP meteorologist, brought his positive energy as emcee and even shared his personal story of the challenges he faced as a young man.
- We reviewed our history and what a community can accomplish when it works together.
- Youth shared how they used their strengths to overcome challenges and reach their goals.
- Hanna Getachew-Kreusser, Executive Director, shared our new mission and vision statements.
- Lieutenant Governor Peggy Flannagan proclaimed April 28 as Face to Face Day.
- Friend and donor, Michele Gellerman, shared how her daughter utilized therapy from Face to Face to turn her life around.

Did you miss the event? Watch it at bit.ly/f2f50event



Nan Skelton and Ann Ricketts recognized for archiving Face to Face's history



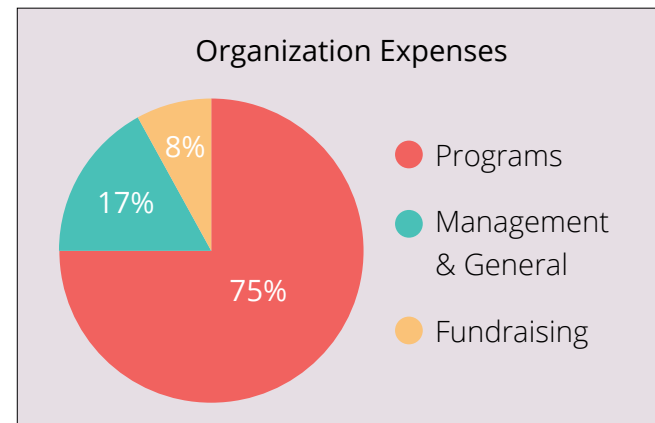
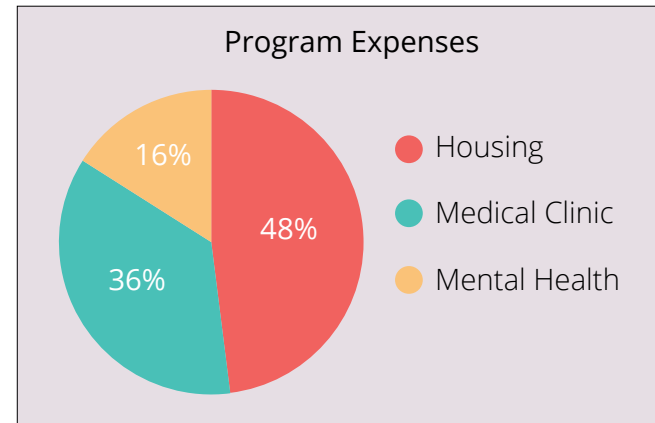
Matt Serwe, KSTP meteorologist and emcee

Our Finances

We are grateful for the community support that allowed us to provide what young people need and deserve.

For every dollar spent to deliver services, the return is at least \$3.38 in social value.

Revenue	
Contributions	\$1,054,527
Government Grants	\$2,549,613
Program Services	\$728,305
In-Kind Contributions	\$343,702
Rental Income	\$262,577
Interest Income	\$152
Miscellaneous Income	\$93,857
Total Revenue	\$5,032,733
Expenses	
Programs	\$3,780,672
Fundraising	\$393,087
Management & General	\$869,115
Total Expenses	\$5,042,874
Net Assets	
Beginning Net Assets	\$2,015,364
Ending Net Assets	\$2,005,223
Change in Net Assets	-\$10,141



Financial information is for the fiscal year ending June 30, 2022 and was audited by Adbo Certified Public Accountants & Consultants.

View our full audit and Form 990 at face2face.org/about/reports-financials.

Board of Directors

Thomas Kottke, Chair

Eugene Nichols, Vice Chair

Robert Siegfried, Treasurer

Michael S. Jordan, Secretary

Sofia Ali

Jeremy Ellison

Madeline Gragg

Jannine Hébert

Deborah Loon Stumbras

Alice Lor

Shamsur "Ramond" Mahmud

Laverne McCartney Knighton

Edward Murphy

Meagan Phillips

William Reynaga

Peter Scott

Rev. Dr.

Edward Treat



Leadership Team

Hanna Getachew-Kreusser,
Executive Director

Tom Gibson, Director of Programs

Peter Fischer, Director of Finance

Stephanie Reinitz, Director of Operations

Melissa Peterson, Director of
Development & Community Engagement

Sara Barney, Mental Health Manager

Rachel Greenwald, Housing & Youth
Justice Manager

Jessica Roy, Clinic Operations Manager

Matthew Sexton, Education and
Employment Manager

^
Board members
Peter Scott and
Eugene Nichols

Thank You!

Community support ensures youth have access to all they need on their journey.



Macalester softball team volunteered to deep clean the medical clinic



Hamline Methodist Church Youth Group volunteered to pack snack bags for SafeZone

*74 volunteers, interns, and residents gave 4,140 hours for a value of \$118,156**



Securian Financial volunteered to decorate SafeZone for Halloween



General Mills volunteers helped organize the SafeZone resource room

*Based on \$28.54 per hour from 2021 estimated value of volunteer time by the Independent Sector.